

# There's lots to discover on the King George V Nature Trail



How much nature can you discover at KGV field?  
Use this booklet to find all ten rubbings posts. Grab a crayon and match each post to the right page using the clues.



Where is the King George V Nature Trail?

From the car park at the end of Howlbeck Rd, Guisborough, walk around to the right of the swimming pool and turn left into the line of mature trees.

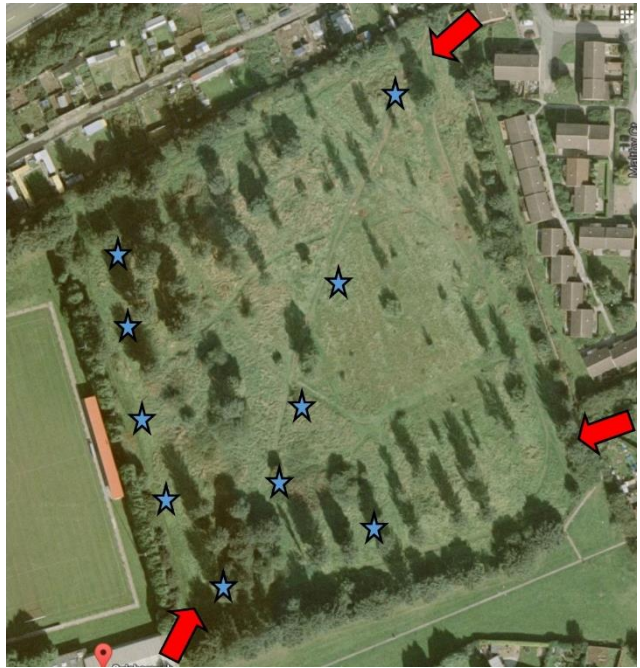


# Finding your way around.

There are 3 entrances;

- next to the swimming pool,
- from Borrowby Court
- from Maltby Court

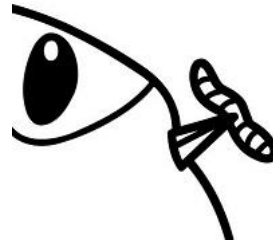
It doesn't matter where you start.  
If you walk the main paths you should find all nine posts easily.



When you find a post, have a good look at the picture...



...then do some detective work to match it to a clue at the top of one of the pages.

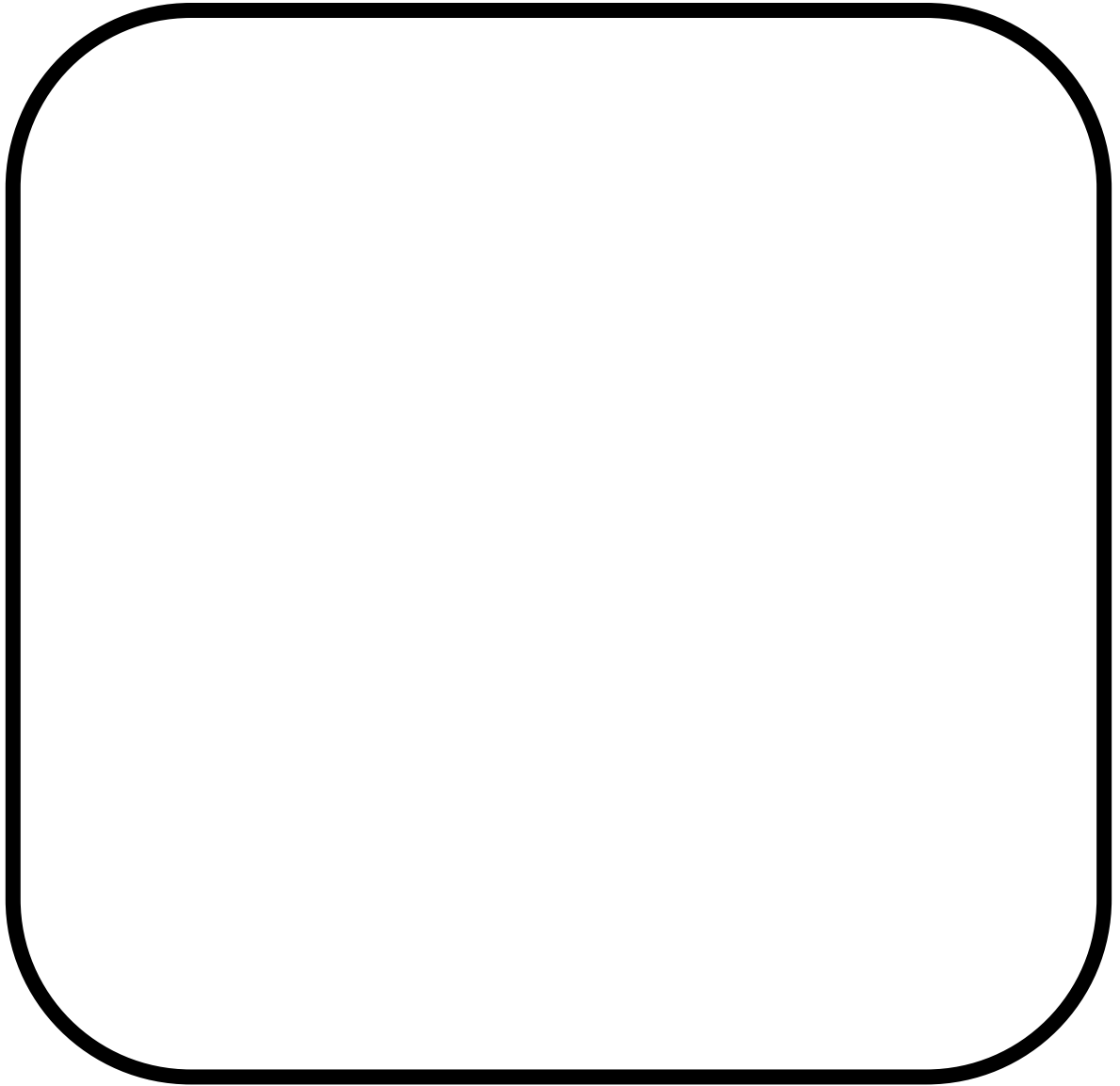


Now you can do your rubbing in the big square on that page.

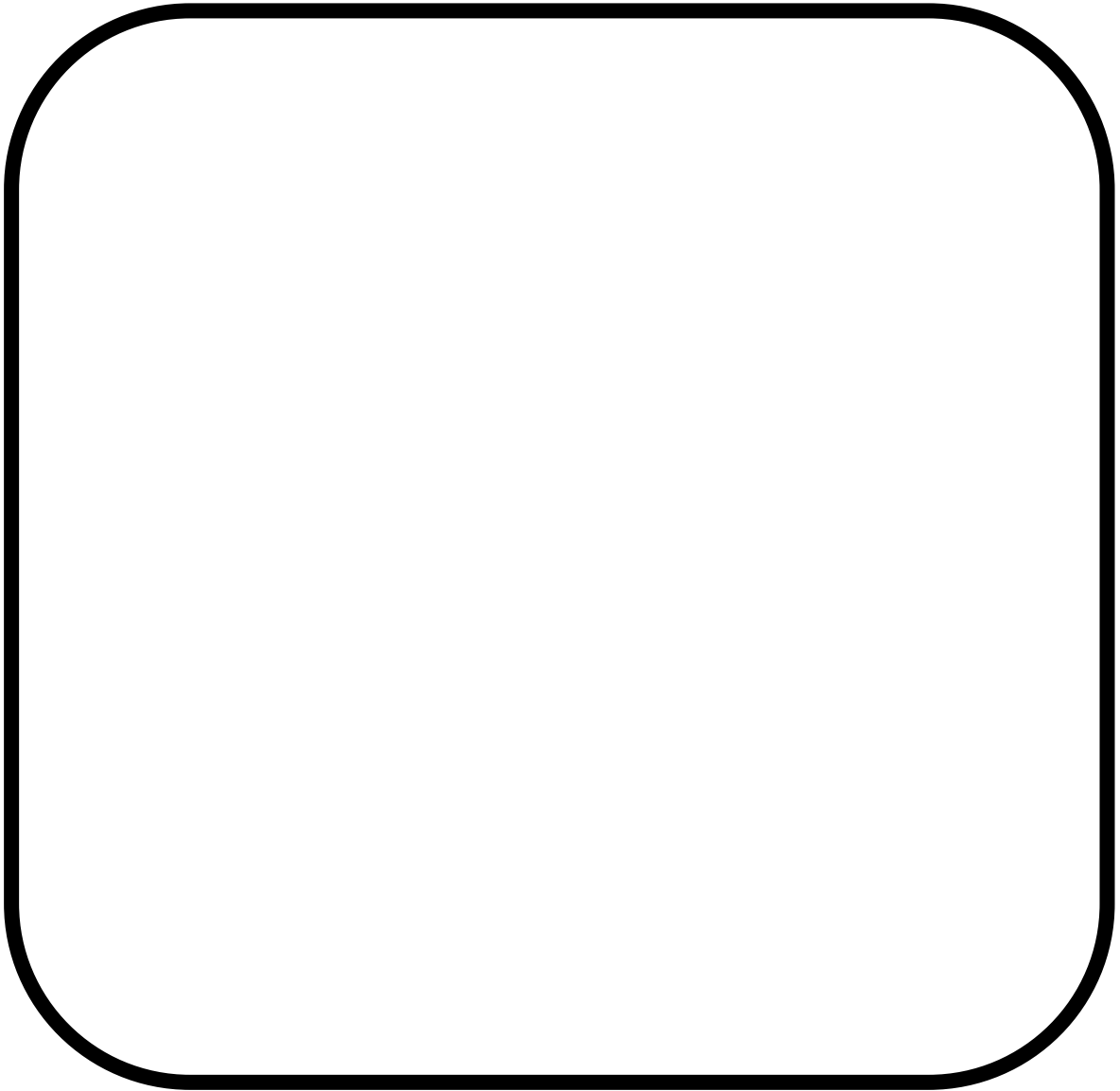
### Top Tips!

- Carefully place the square over the plaque and hold the page REALLY still
- Use the long flat side of a crayon (not the tip)
- Press firmly and try to rub over the whole picture
- HAVE FUN!

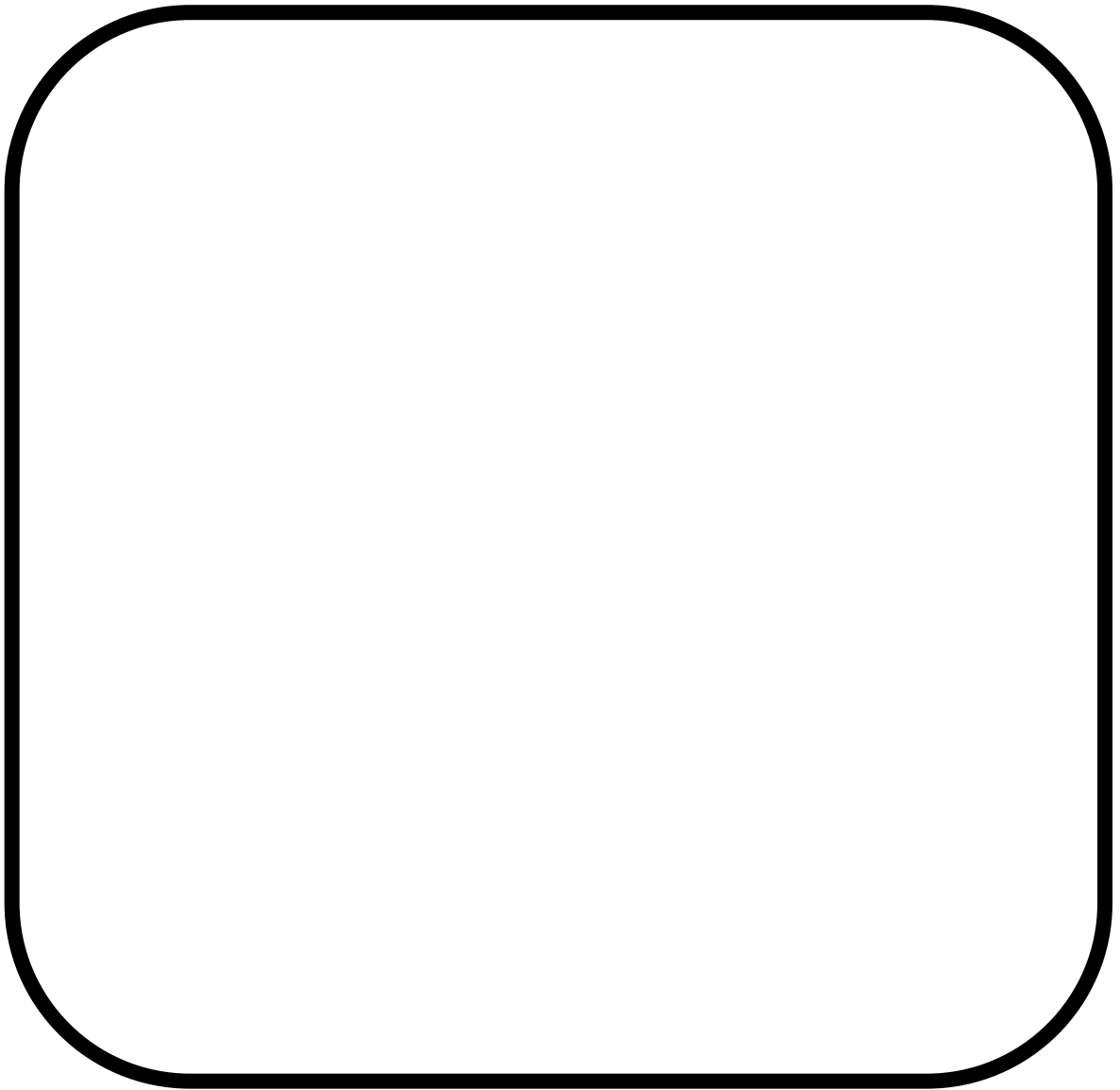
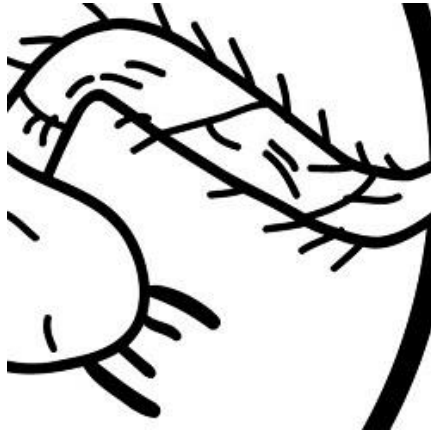
The trail is funded by the Heritage Lottery Fund and this booklet is produced by the Wild Green Places project for the Friends of King George V Field. For more info visit [www.tvgreenplaces.co.uk](http://www.tvgreenplaces.co.uk) or 'TVgreenplaces' on Facebook.



Bumblebees are fuzzy, buzzy and busy! They're much more interested in looking for flowers than hurting anyone. Maybe try watching one for a while and see what flowers it like best?

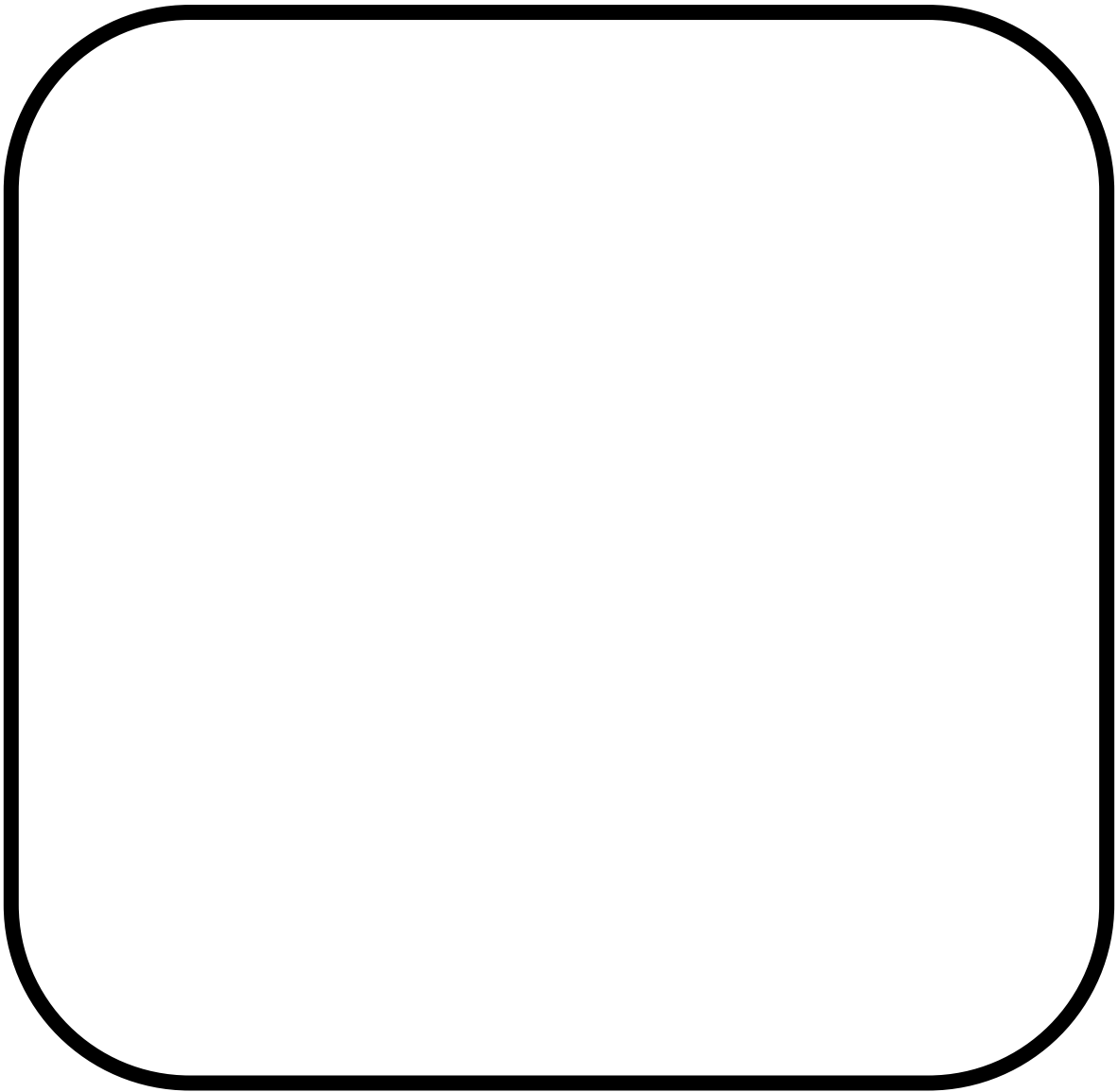
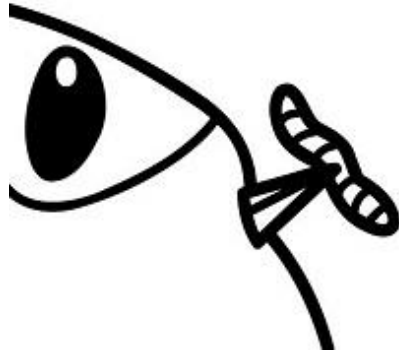


Leaves come in all sorts of shapes and sizes. See how many different shapes can you spot while walking around the trail.



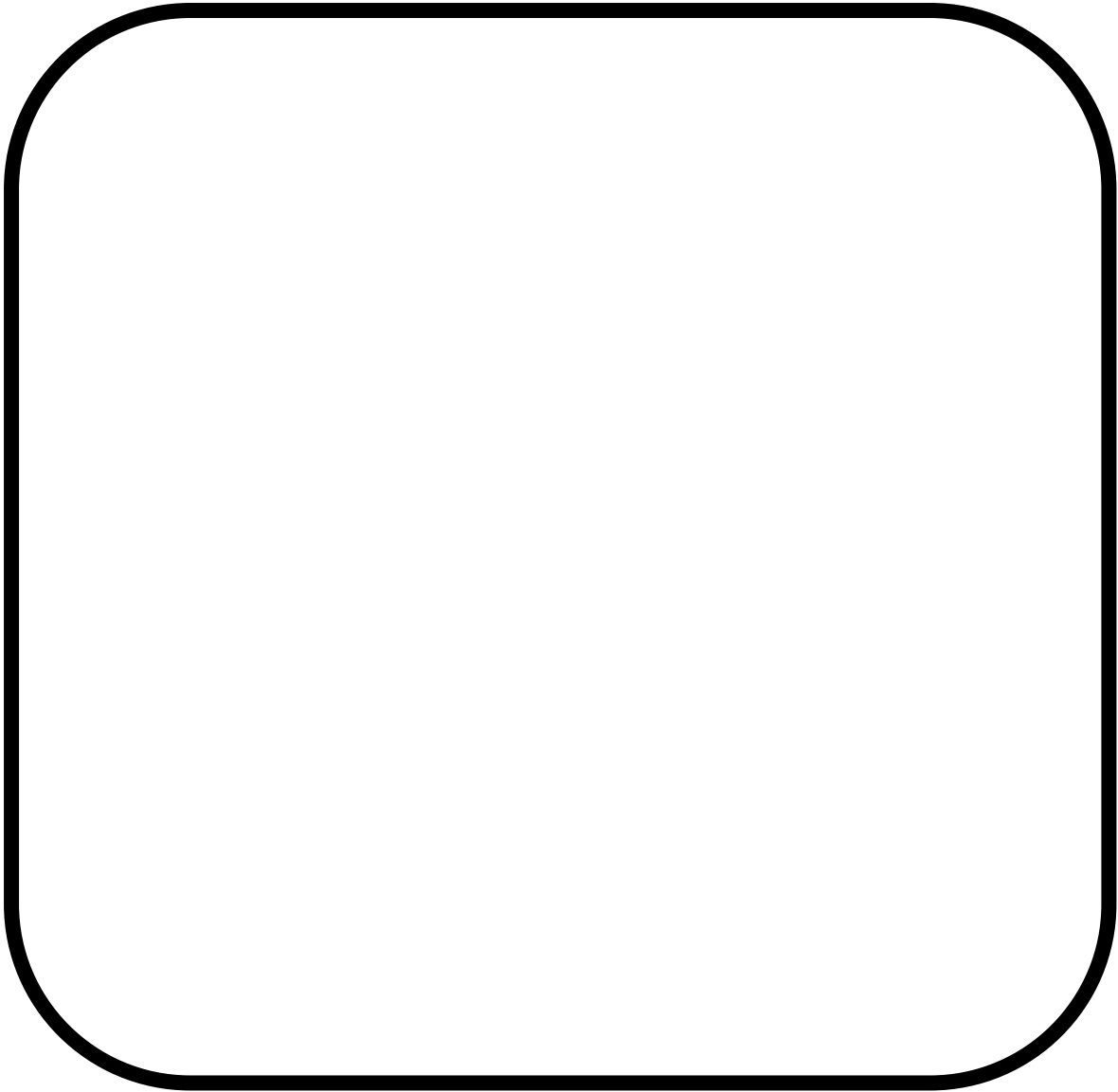
Minibeasts, like spiders, beetles and worms are not only weird and wonderful, they also do lots of important jobs in nature.

Can you think of any important jobs a spider might do?

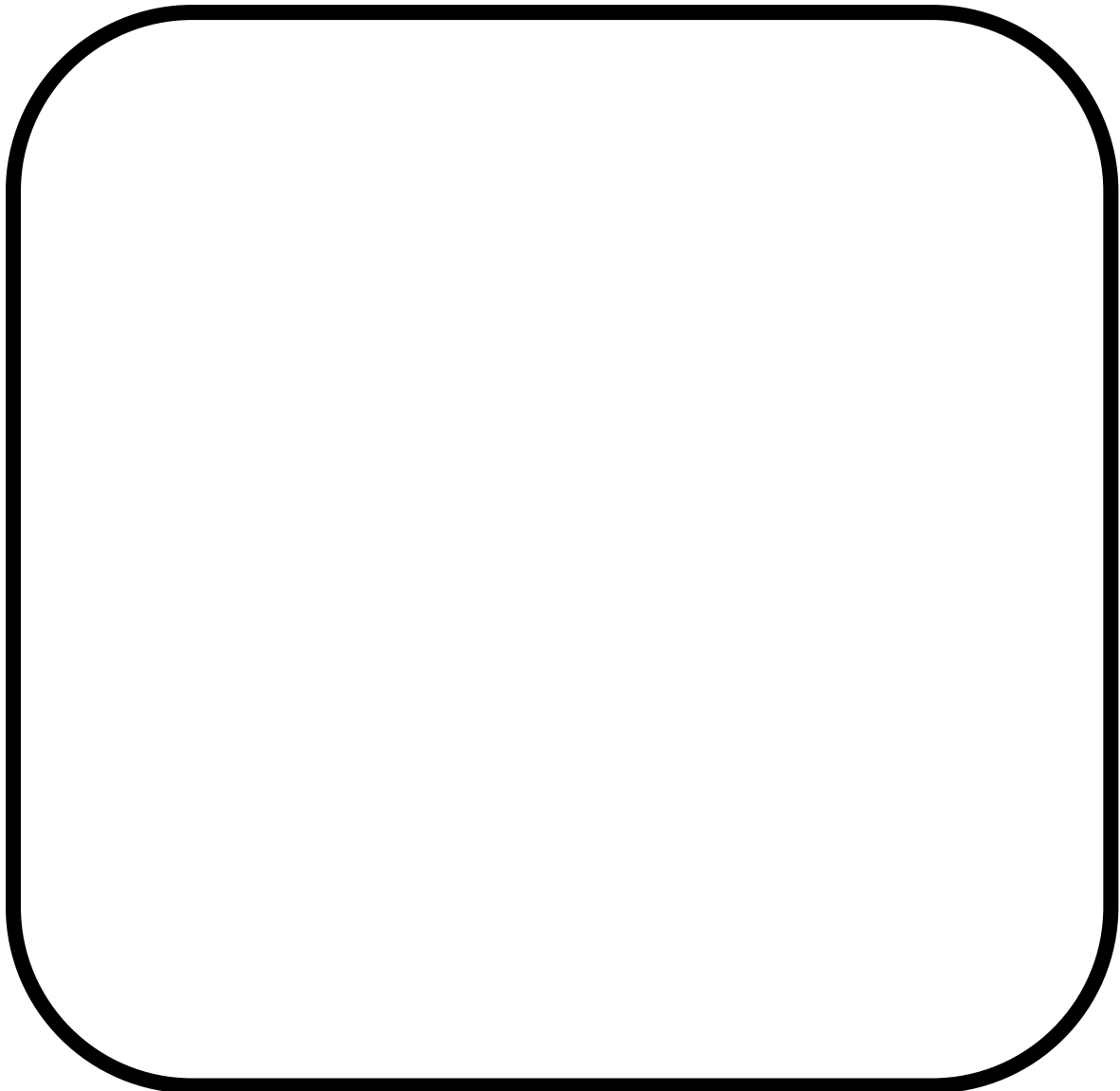


In spring, mummy and daddy birds need to find lots of bugs and caterpillars to feed growing chicks.

Could you leave a corner of your garden to grow a bit wild where bugs could live so birds can find them?

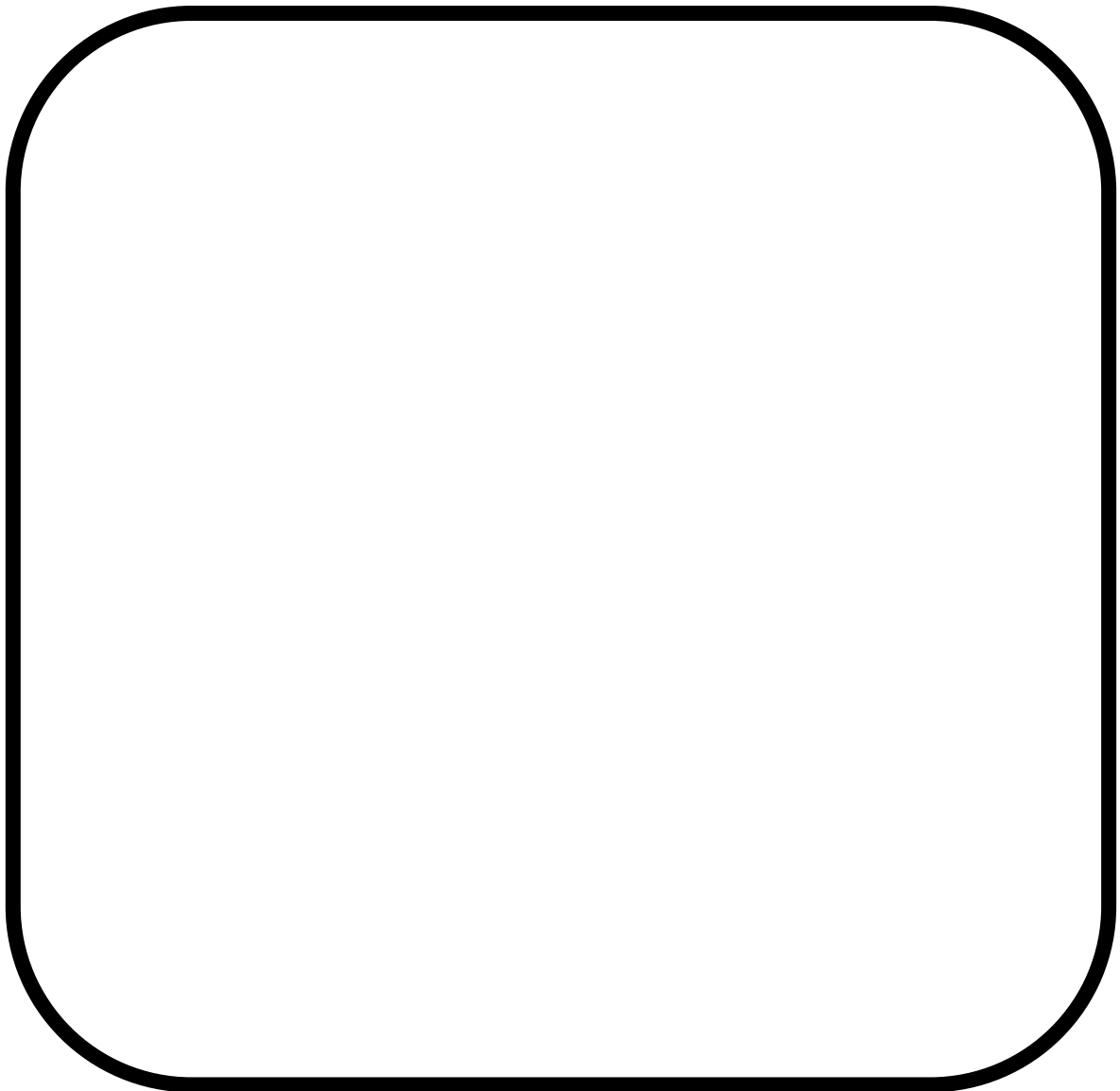


There are lots of seeds, fruits and nuts at KGV field for mice to eat.  
But can you think of any animals who might like to eat a mouse?!



Plants, like hogweed and cow parsley, grow at the edges of the paths. They have flowers in the spring and seeds in autumn.  
Which is your favourite time of year?

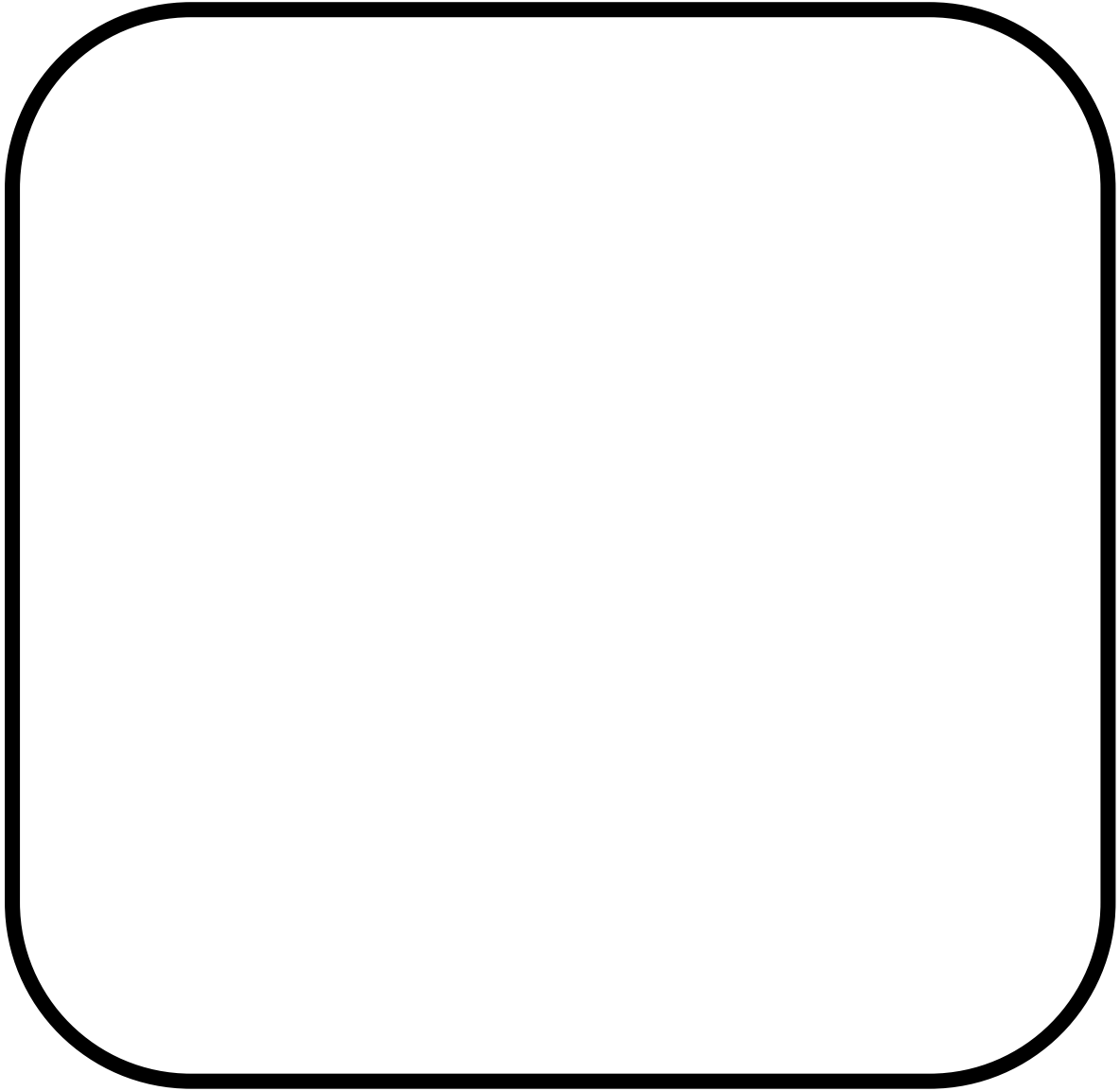




Ladybirds come in a wide range of colours and patterns. Our most common is the 7 spot ladybird, which is red with black spots. Look carefully on leaves and twigs to see how many types you can find.

A large, empty rounded rectangular box with a thick black border. The box is intended for a student to write their answer to the question below.

Finding a feather is a great clue that wildlife has been here.  
Can you think of any other clues you might find that wildlife have left behind?



Small birds, like Great Tits, like to hide in thorny bushes when they feel scared. Why are thorny bushes like Hawthorn a good place to hide?